



ONCOLOGY  
Disposable Infusion pumps



Value Life

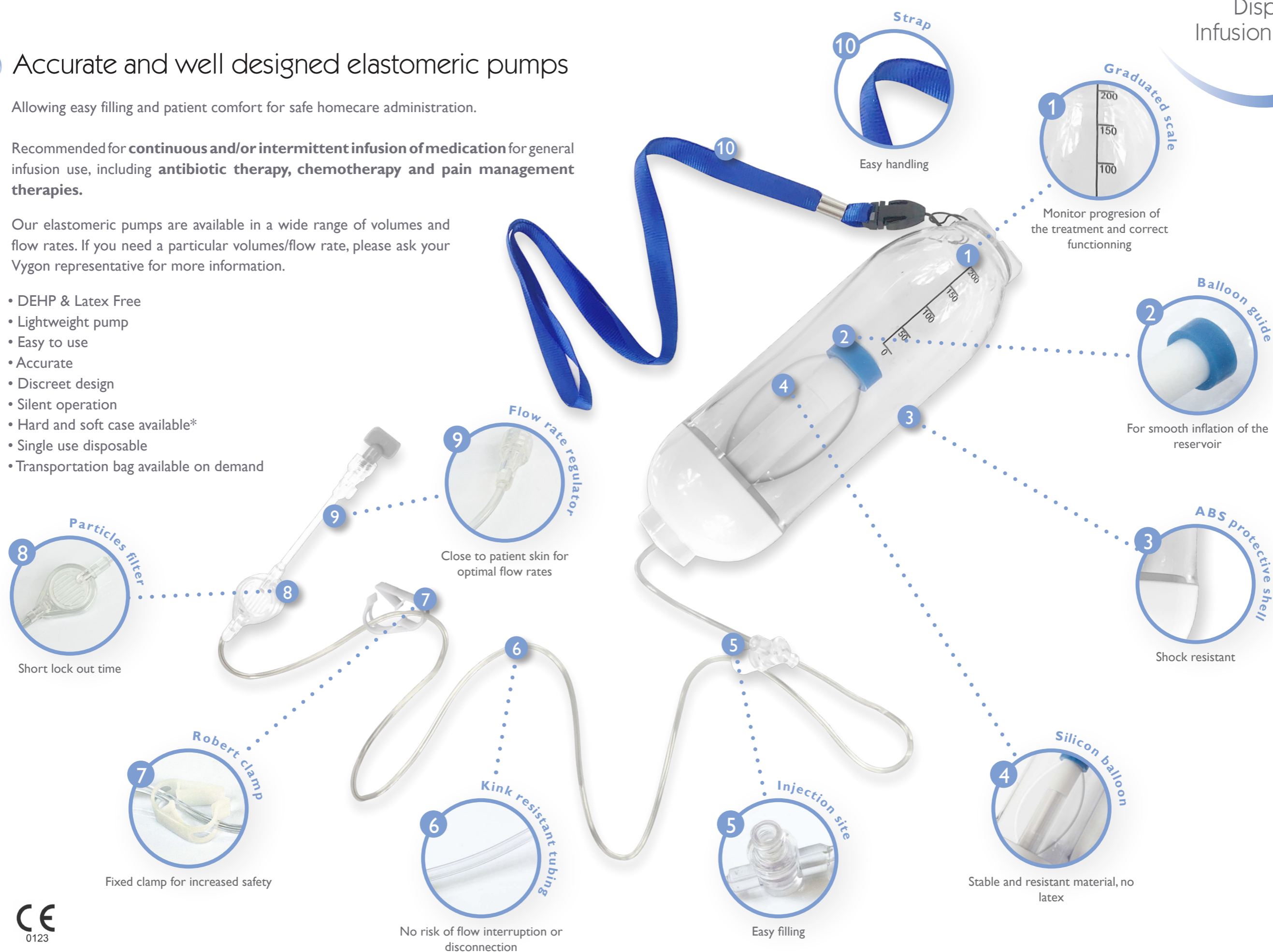
## Accurate and well designed elastomeric pumps

Allowing easy filling and patient comfort for safe homecare administration.

Recommended for **continuous and/or intermittent infusion of medication** for general infusion use, including **antibiotic therapy, chemotherapy and pain management therapies.**

Our elastomeric pumps are available in a wide range of volumes and flow rates. If you need a particular volumes/flow rate, please ask your Vygon representative for more information.

- DEHP & Latex Free
- Lightweight pump
- Easy to use
- Accurate
- Discreet design
- Silent operation
- Hard and soft case available\*
- Single use disposable
- Transportation bag available on demand



CE  
0123

\* Contact your sales representative for more information on soft case pump

## Disposable Infusion Pumps Specifications

Below some specifications of the pumps we offer.

If you have a particular request for specific volume sizes or flow rates not mentioned below, please contact your Vygon Representative for more information.

### Disposable Infusion Pumps available

- Continuous flow rate infusion
- Multirate infusions

### Reservoirs volume size (other volumes on demand):

50ml, 60ml, 100ml, 150ml, 200ml, 250ml, 275 ml

### Continuous Flow Rate Infusions

(other flow rates on demand):

- 2ml, 3ml, 4ml, 5ml, 6ml, 8ml, 10ml, 20ml, 50ml, 100ml/hr

### < Lock Out Time >

15 min

### Multirate Infusions:

- 0/1/2/3/4/5/6/7 ml/hr
- 0/2/4/6/8/10/12/14 ml/hr



Transportation bag for  
Vygon elastomeric pumps  
(from 50 to 275ml)

### Infusion data information given as an indication

Product code	Volume	Flow rate	Flow rate accuracy	Approximate residual volume
05060002001	60 ml	2ml/h	± 15%	5%
05100004001	100 ml	4ml/h	± 15%	4%
05200002001	200 ml	2ml/h	± 15%	2%
05275005001	275 ml	5ml/h	± 15%	2%

## Increased safety with **qimono** Closed System Transfer Device (CSTD)

In homecare settings the risks of contamination by cytotoxic drugs for patient's family and Nurses handling chemotherapy, is clinically proven<sup>(1)</sup>.

In order to reduce these risks, use of CSTD such as **qimono** is strongly recommended. During an in-vitro study, **qimono** safe connectors have demonstrated a significant exposure reduction when disconnecting elastomeric pumps from patient vascular access<sup>(2)</sup>

With its spinning system **qimo** ♂ cannot be disconnected from the IV tubing of the elastomeric pump, thus preventing hazardous drugs leakage at disconnection.

**qimo** ♀ has a universal proximal connection that allows flushing the patient vascular access at the end of chemotherapy to comply with standard good practice.

**qimono** is a unique device that fits perfectly with your elastomeric pump to protect nurses and patient's family members from hazardous drugs toxicity.

**(qimono safe connectors have to be ordered separately.)**

**qimo** ♂ + **qimo** ♀



**qimoflow** +

**qimoflow** + is a single handed activation Huber Needle, with positive pressure.

It includes a **qimo** ♀ to connect to **qimo** ♂ that safely secures your elastomeric pump.

Product codes

Disposable Infusion Pumps Continuous Flow Rate*									
Product code	Flow rate mL/h	Perfusion Time	Product code	Flow rate mL/h	Perfusion Time	Product code	Flow rate mL/h	Perfusion Time	Color Code
<b>Volume 50mL</b>			<b>Volume 60mL</b>			<b>Volume 100mL</b>			
05050002001	2mL	1 day 1 hour	05060002001	2mL	1 day 6 hours	05100002001	2mL	2 days 2 hours	Yellow
05050003001	3mL	17 hours	05060003001	3mL	20 hours	05100003001	3mL	1 day 9 hours	Pink
05050004001	4mL	13 hours	05060004001	4mL	15 hours	05100004001	4mL	1 day 1 hour	Orange
05050005001	5mL	10 hours	05060005001	5mL	12 hours	05100005001	5mL	20 hours	Green
05050006001	6mL	8 hours	05060006001	6mL	10 hours	05100006001	6mL	17 hours	Blue
05050008001	8mL	6 hours	05060008001	8mL	7.5 hours	05100008001	8mL	12.5 hours	Grey
05050010001	10mL	5 hours	05060010001	10mL	6 hours	05100010001	10mL	10 hours	Purple
05050020001	20mL	2.5 hours	05060020001	20mL	3 hours	05100020001	20mL	5 hours	Red
<b>Volume 150mL</b>			<b>Volume 200mL</b>			<b>Volume 250mL</b>			
05150002001	2mL	3 days 3 hours	05200002001	2mL	4 days 4 hours	05250002001	2mL	5 days 5 hours	Yellow
05150003001	3mL	2 days 2 hours	05200003001	3mL	2 days 18 hours	05250003001	3mL	3 days 12 hours	Pink
05150004001	4mL	1 day 14 hours	05200004001	4mL	2 days 2 hours	05250004001	4mL	2 days 14 hours	Orange
05150005001	5mL	1 day 6 hours	05200005001	5mL	1 day 16 hours	05250005001	5mL	2 days 2 hours	Green
05150006001	6mL	1 day 1 hour	05200006001	6mL	1 day 10 hours	05250006001	6mL	1 day 17 hours	Blue
05150008001	8mL	19 hours	05200008001	8mL	1 day 1 hour	05250008001	8mL	1 day 7 hours	Grey
05150010001	10mL	15 hours	05200010001	10mL	20 hours	05250010001	10mL	1 day 1 hour	Purple
05150020001	20mL	7.5 hours	05200020001	20mL	10 hours	05250020001	20mL	12.5 hours	Red
			<b>Volume 275mL</b>						
			05275002001	2mL	5 days 17 hours				Yellow
			05275003001	3mL	3 days 19 hours				Pink
			05275004001	4mL	2 days 21 hours				Orange
			05275005001	5mL	2 days 7 hours				Green
			05275006001	6mL	1 day 22 hours				Blue
			05275008001	8mL	1 day 10 hours				Grey
			05275010001	10mL	1 day 4 hours				Purple
			05275020001	20mL	14 hours				Red



Disposable Infusion Pumps Variable Flow Rates*					
Product code	Flow rate mL/h	Product code	Flow rate mL/h	Product code	Flow rate mL/h
<b>Volume 60mL</b>		<b>Volume 100mL</b>		<b>Volume 150mL</b>	
17060301801	0/1/2/3/4/5/6/7mL	17100301801	0/1/2/3/4/5/6/7mL	17150301801	0/1/2/3/4/5/6/7mL
17060302801	0/2/4/6/8/10/12/14mL	17100302801	0/2/4/6/8/10/12/14mL	17150302801	0/2/4/6/8/10/12/14mL
<b>Volume 200mL</b>		<b>Volume 250mL</b>		<b>Volume 275mL</b>	
17200301801	0/1/2/3/4/5/6/7mL	17250301801	0/1/2/3/4/5/6/7mL	17275301801	0/1/2/3/4/5/6/7mL
17200302801	0/2/4/6/8/10/12/14mL	17250302801	0/2/4/6/8/10/12/14mL	17275302801	0/2/4/6/8/10/12/14mL



Transportation Bag for Elastomeric Pump	
Product code	Volume
800ZBG	50ml to 275ml



\* 60 & 100mL pumps 10 units per box - 8 boxes per carton (80 units per carton)  
150 -200- 250 & 275mL pumps 10 units per box - 6 boxes per carton (60 units per carton).

\* 60 & 100mL pumps 10 units per box - 8 boxes per carton (80 units per carton)  
150 -200- 250 & 275mL pumps 10 units per box - 6 boxes per carton (60 units per carton).

Secure your elastomeric pump with one of the below **qimono** sets\*

\*qimono fits with any existing elastomeric pump available on the market (ask your Vygon Representative for more information).

	Brand name	Code	Product	Description	Indication	Quantity box/case
Option 1	qimoprime, qimo ♂ & qimo ♀	7210.04		Set with qimoprime, qimo ♂ and qimo ♀ in the same packaging.	Can be used to secure the filling port of the elastomeric pump and the distal end of its tubing, but other applications are possible.	50/600
	qimo ♀	7210.02		qimo ♀ is a multi-purpose, closed, needleless and disinfectable safety connector, supplied in individual packaging.	qimo ♀ can be used to connect the tubing of the distal end of the elastomeric pump secured with qimo ♂, to access an implantable port or any other patient vascular device.	50/1200
Option 2	qimoprime & qimo ♂	7210.01		Set supplied with qimo ♂ and qimoprime in the same packaging.	Can be used to secure the distal end of the elastomeric pump tubing. Need to be connected to a qimo ♀	50/600

qimoflow + safety Huber needle including qimo ♀



Gauge	Ø needle (mm)	Length	Code
22G	0.7	15mm	741507*
		17mm	741707
		20mm	742007
		25mm	742507
		30mm	743007
		35mm	743507
20G	0.9	15mm	741509*
		17mm	741709
		20mm	742009
		25mm	742509
		30mm	743009
		35mm	743509
19G	1.1	15mm	741511*
		17mm	741711
		20mm	742011
		25mm	742511
		30mm	743011
		35mm	743511



1 : Yuki et al 2015 Secondary Exposure of Family Members to Cyclophosphamide After Chemotherapy of Outpatients With Cancer: A Pilot Study. Oncology Nursing Forum Vol. 42, No. 6, November 2015  
2 : Levert.H et al, oral presentation at GIFAV Feb 2018 and GERPAC Oct 2019, Safe disconnection of elastomeric pumps.  
Sessink P et al, ESMO Oct 2019, Safe administration of 5-fluorouracil with elastomeric pumps

## INTRAVASCULAR THERAPIES

**For further information, please contact: [questions@vygon.com](mailto:questions@vygon.com)**

The specifications shown in this leaflet are for information only and are not, under any circumstances, of a contractual nature.

---

Vygon – 5, rue Adeline • 95440 ECOUEN • FRANCE  
Reception: +33 (0)1.39.92.63.63 – Service clients France: +33 (0)1.39.92.63.81  
Export customer service: +33 (0)1.39.92.64.15  
Fax.: +33 (0)1.39.92.64.44 • [www.vygon.com](http://www.vygon.com)



[www.vygon.com](http://www.vygon.com)